

BOARD OF REGENTS

05 February 2019

Vision

We will consider this endeavor to be a huge success if...

“...All prospective students are encouraged and inspired by enrolling at Del Mar.”

“... It creates spaces that promote, encourage, and support learning in all its forms and different modalities.”

“...Is empowering, inclusive, and inspirational.”

“...It is a place where students want to stay – whether to finish a degree, or to study, or for research –that makes them feel welcome, comfortable, and want to collaborate.”

“...It feels like a ‘home’ on campus with all the conveniences and comforts.”

“...It facilitates student access and ease of use.”

“...The campus provides a ‘front door’ and supports wayfinding.”

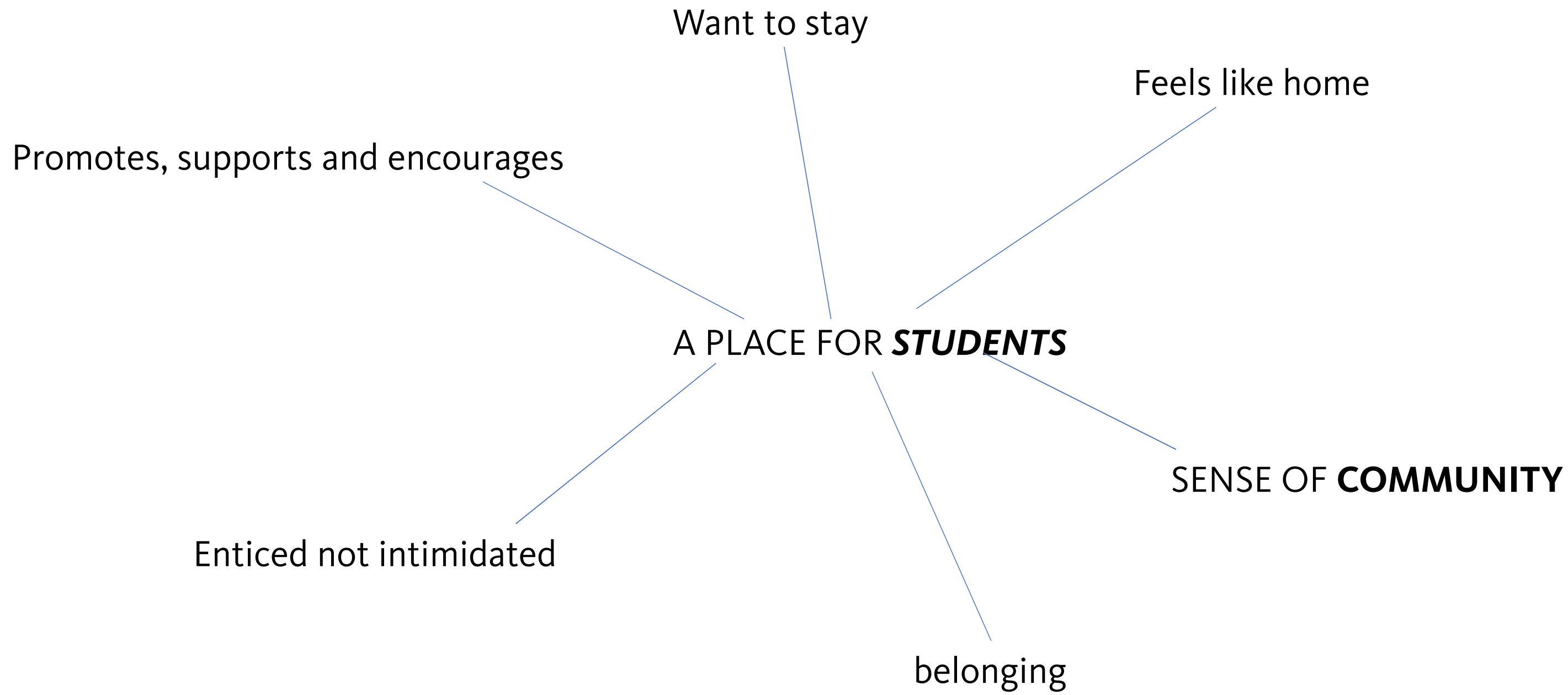
“...It redefines what the DMC experience is and gives students an opportunity to experience college in a different way.”

“...First time in college students are enticed, not intimidated, by the campus - ‘Wow, isn’t this cool?!’”

“...It is an exciting and inspirational campus that continues to attract future generations of students.”

“...It evokes the sense of community, sense of belonging, and ownership of the campus by both the students and the surrounding residents.”

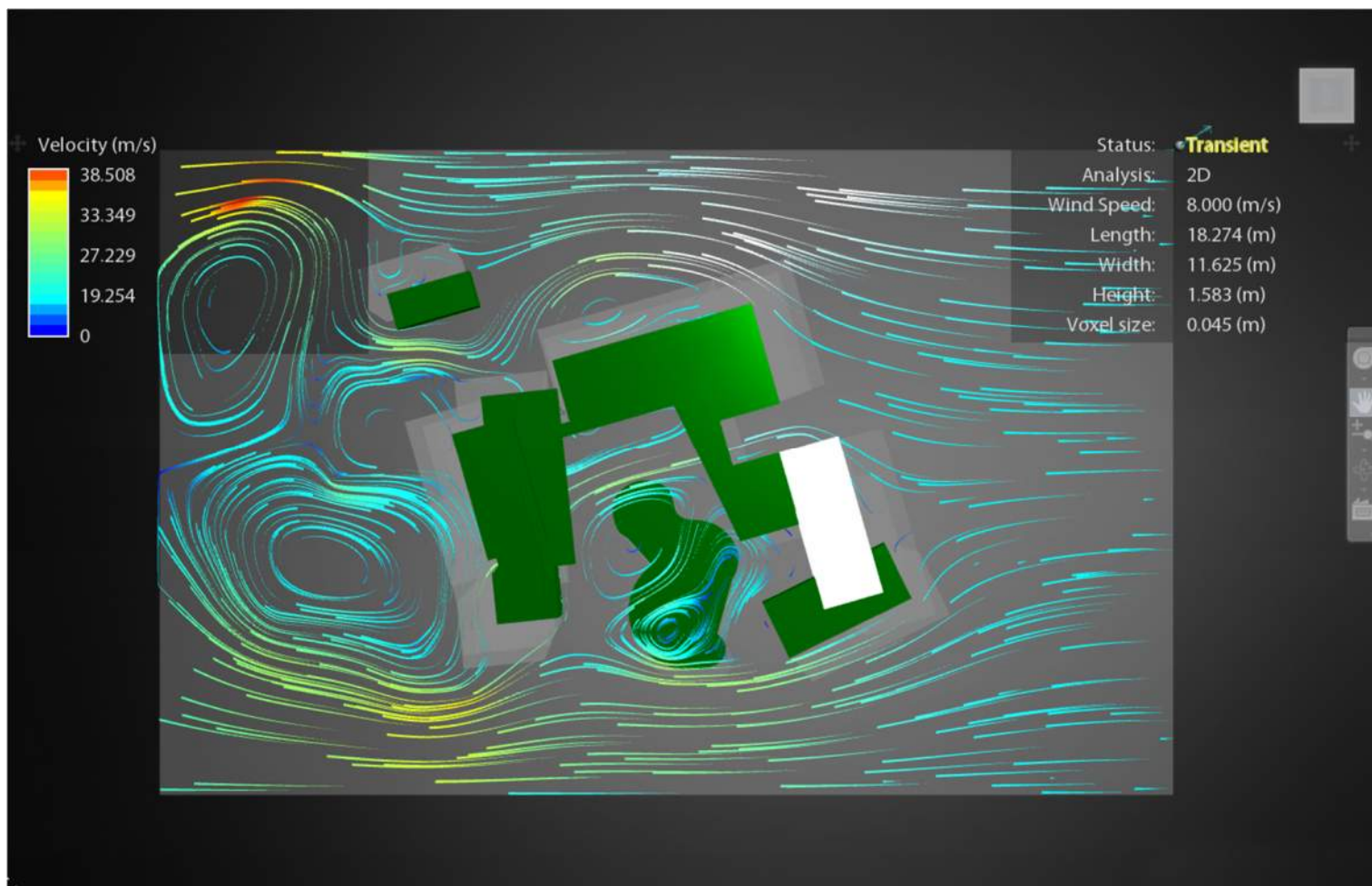
“...If both form and function tangibly impact student success.”



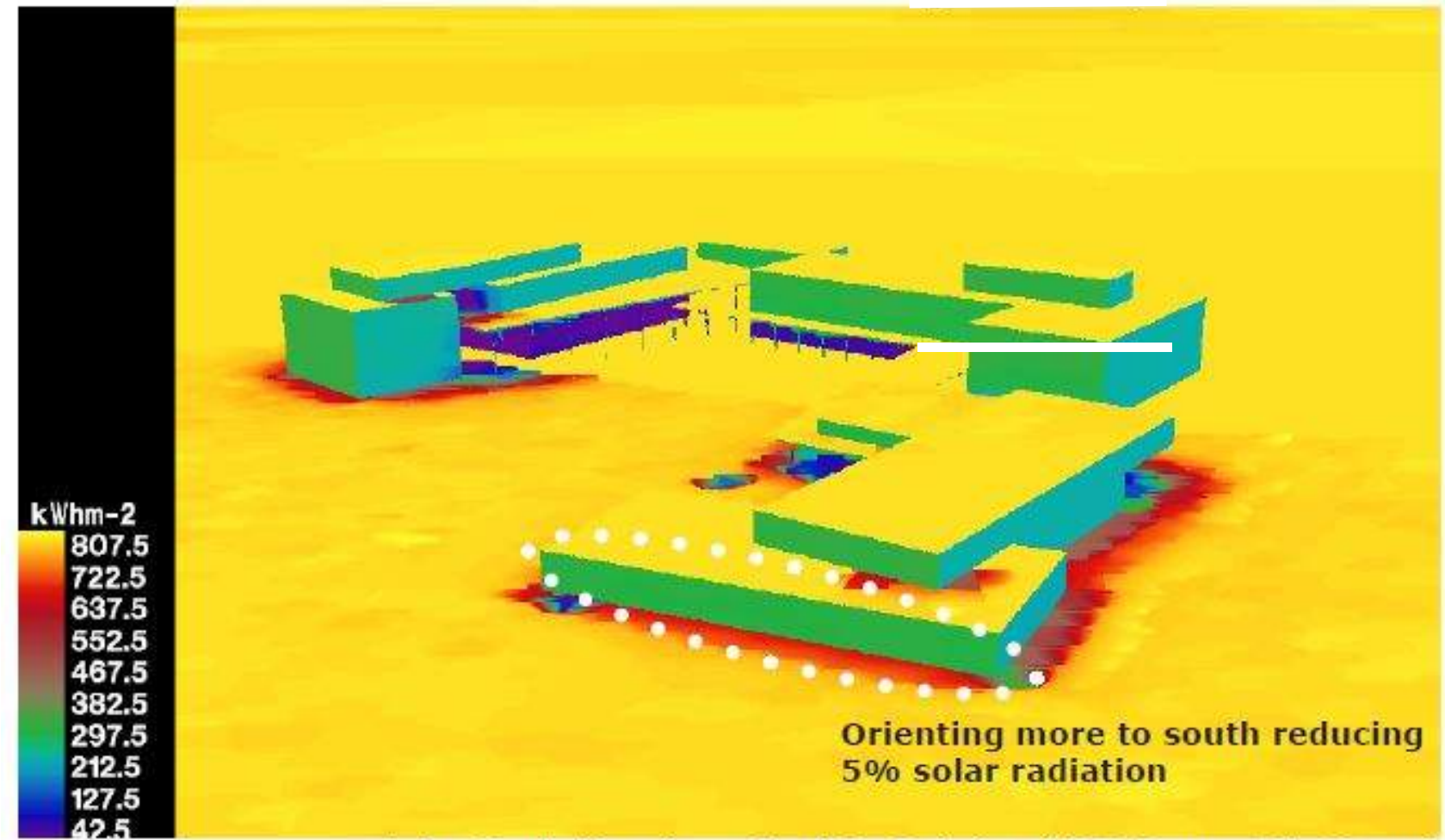




PHASE 1 WIND ANALYSIS



PHASE 1 SOLAR ANALYSIS



Solar Radiation from April to October (10:00 am - 05:00 pm)
South Perspective



DEELMAAR
COLLEGE
EXTERIOR

SUNRISE





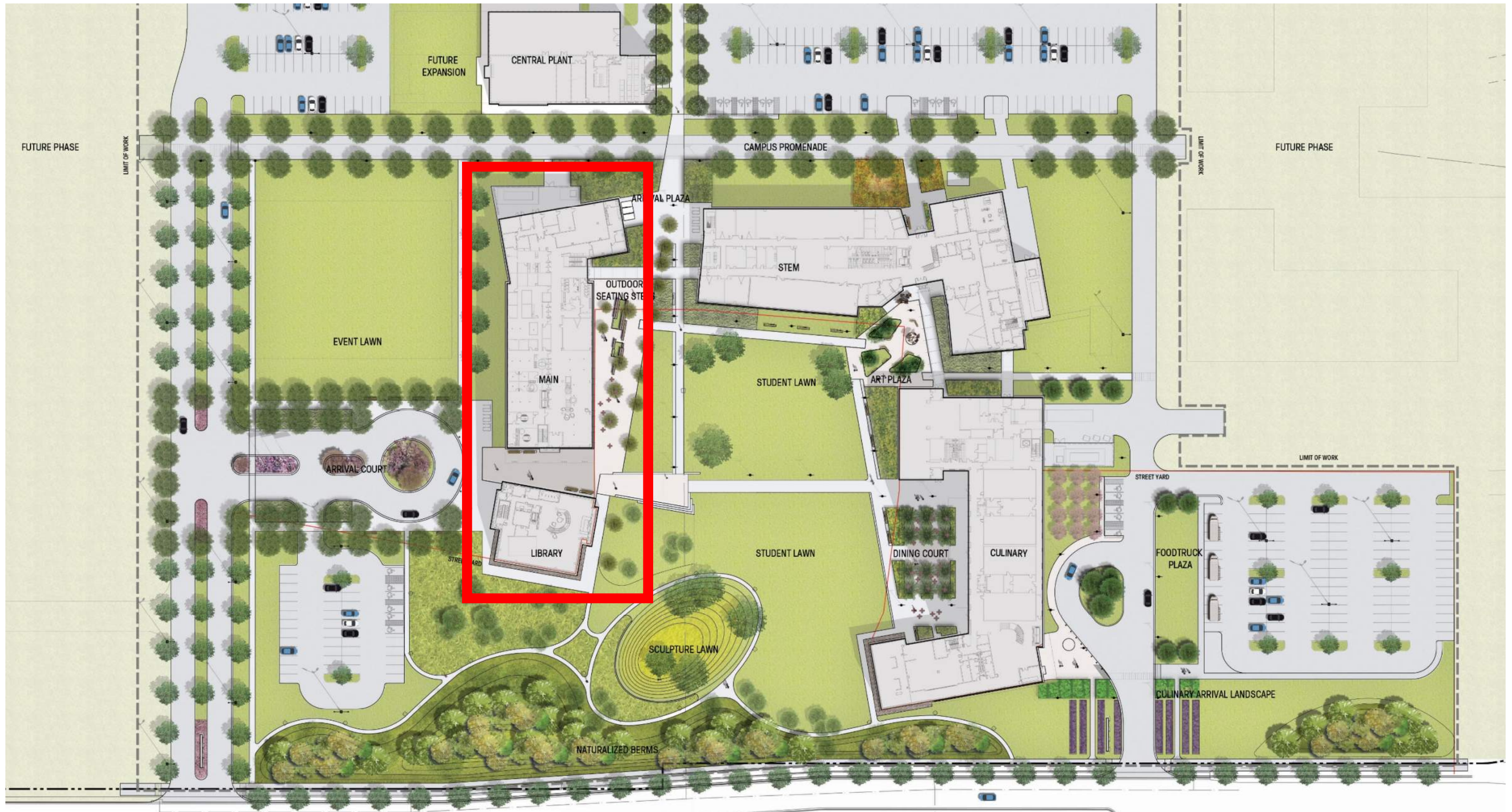




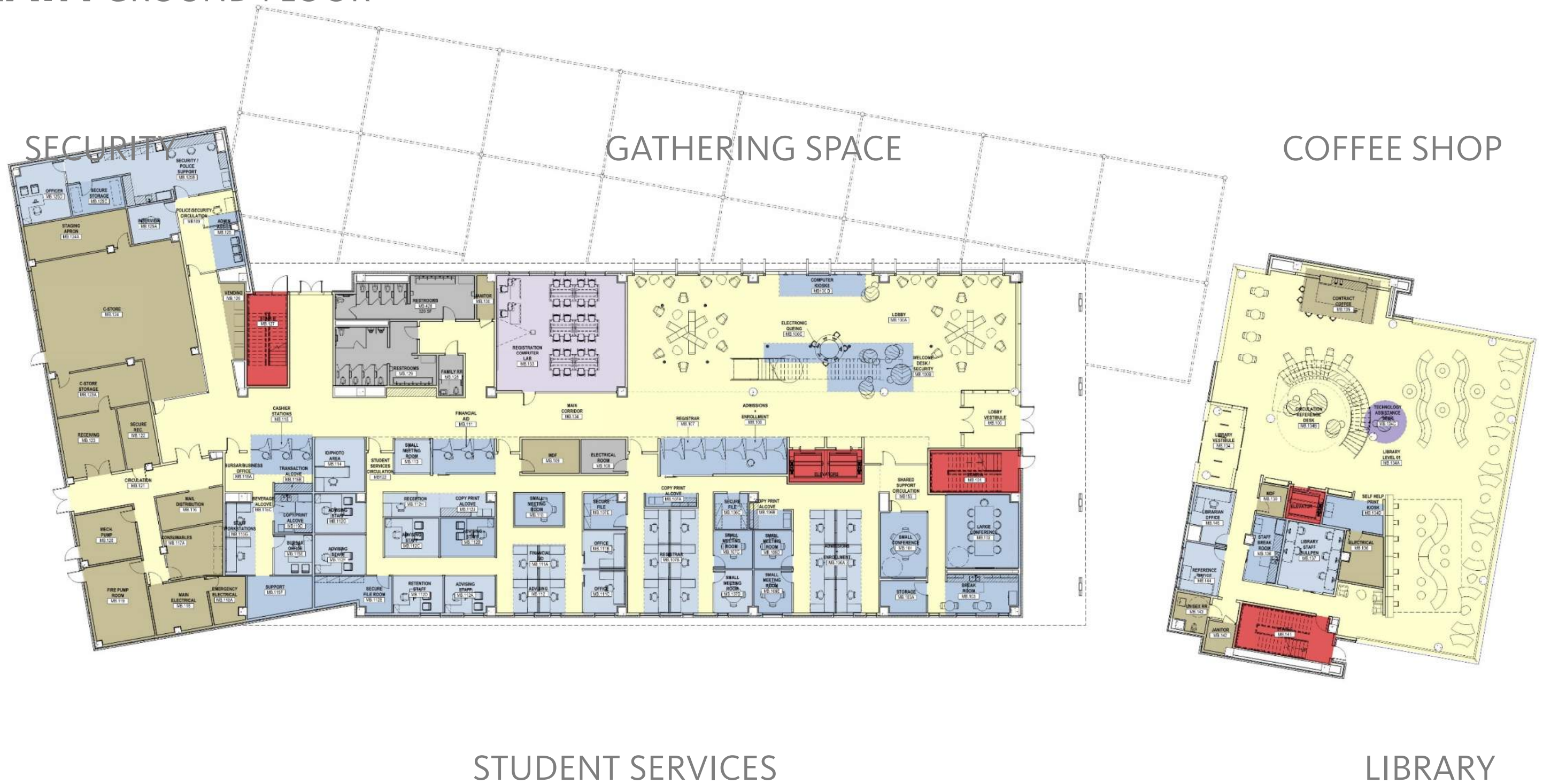


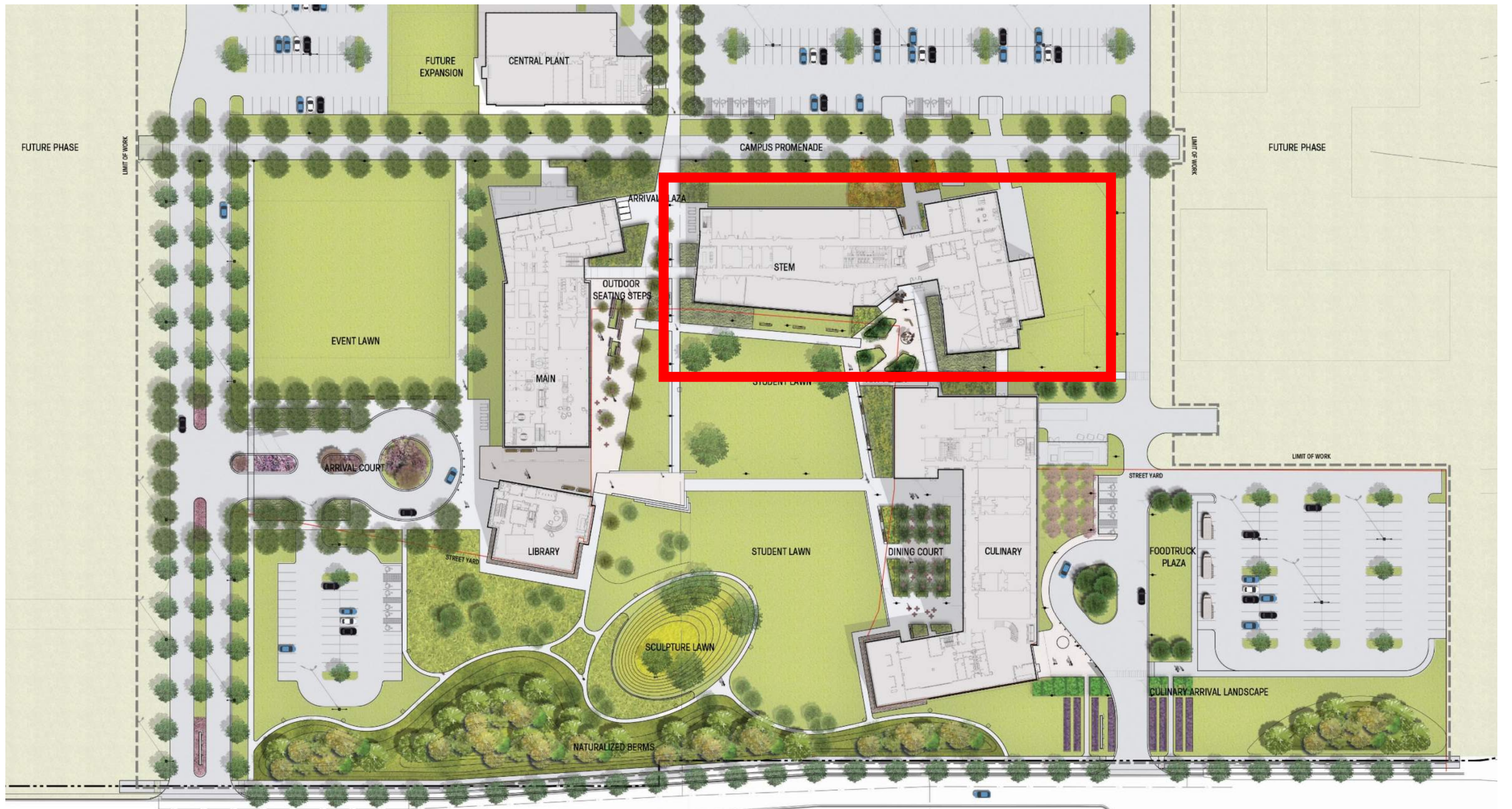


FLOOR PLANS



MAIN GROUND FLOOR

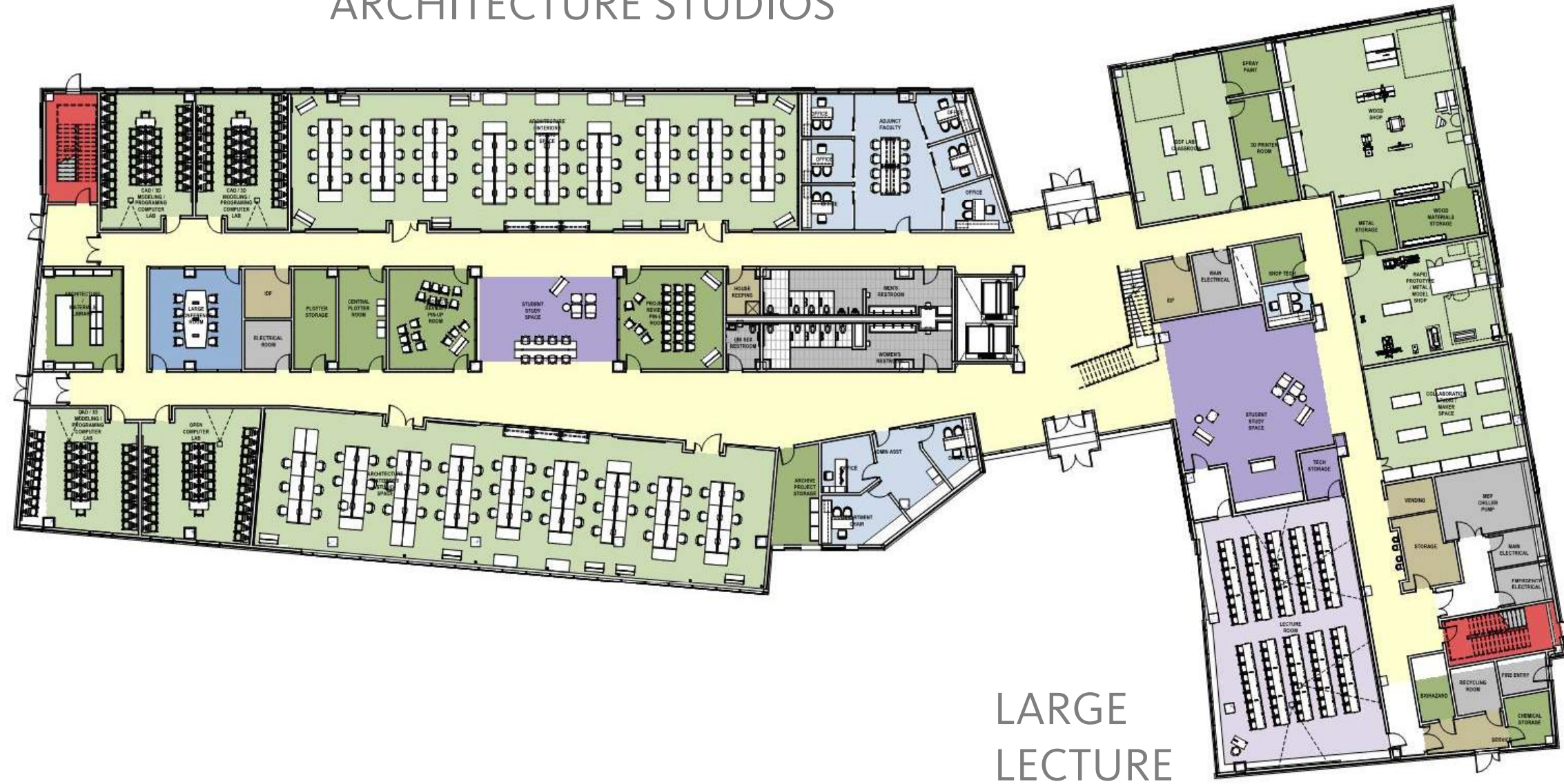




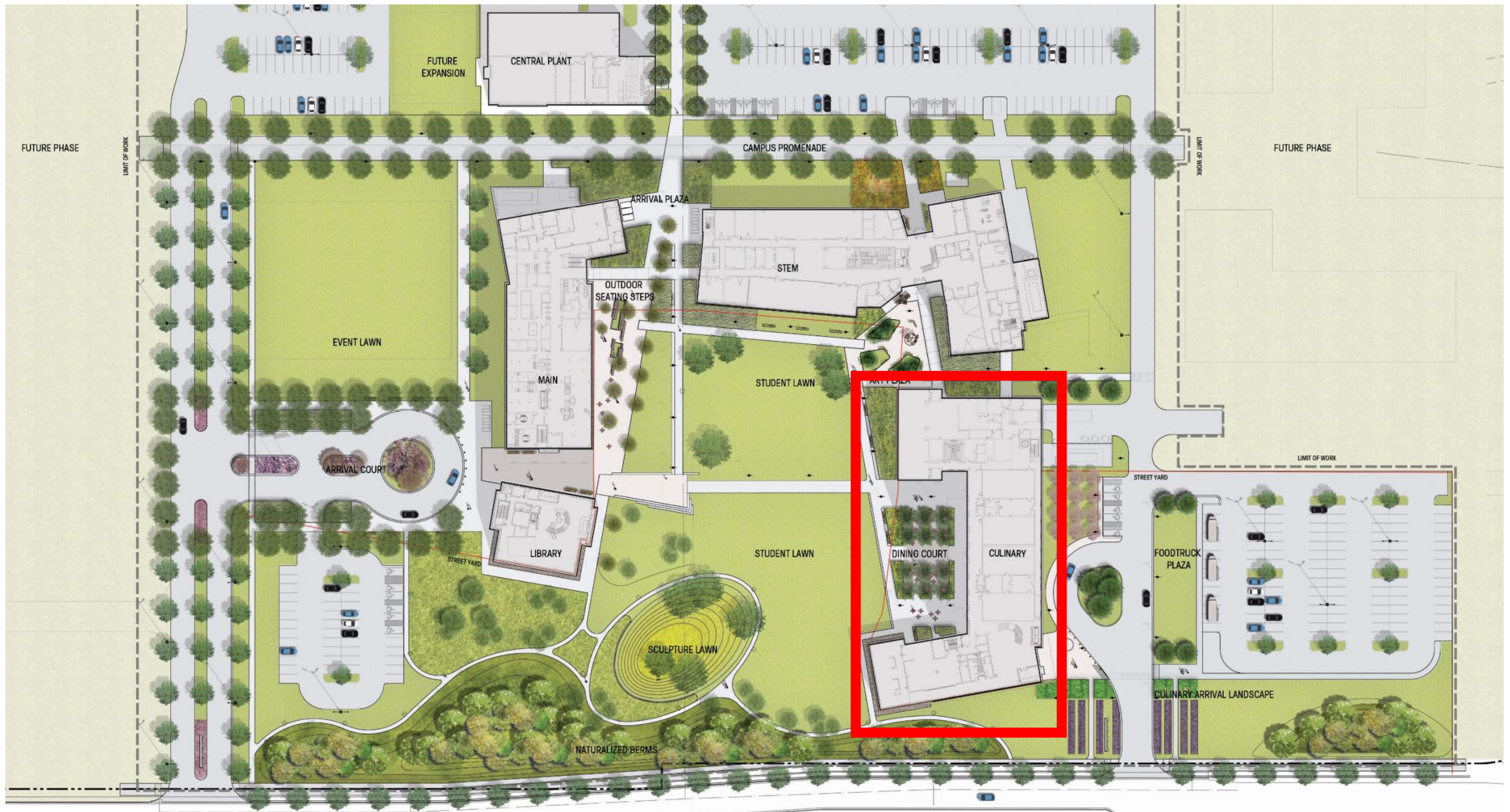
STEM GROUND FLOOR

ARCHITECTURE STUDIOS

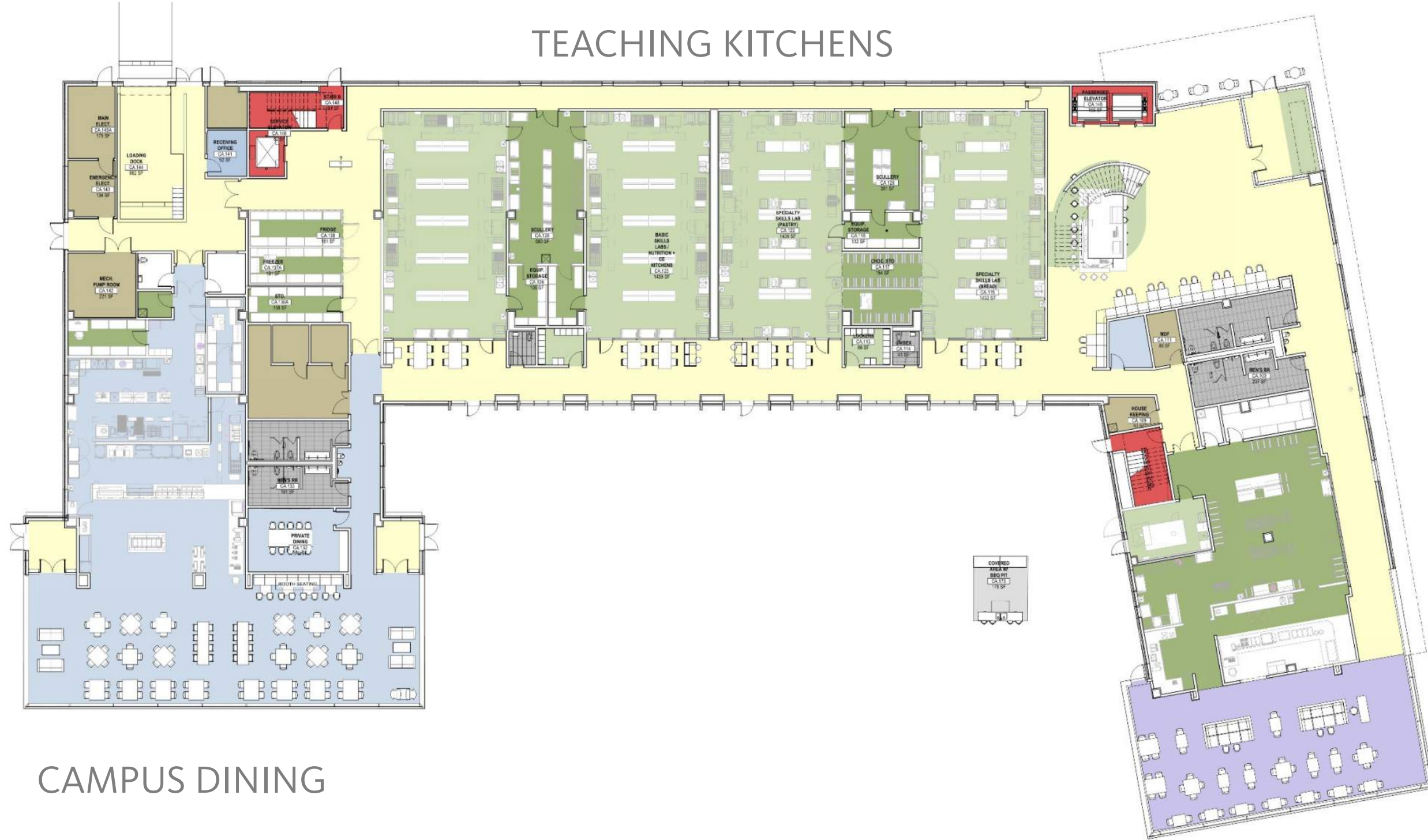
MAKER SPACE



LARGE LECTURE



CULINARY ARTS FIRST FLOOR



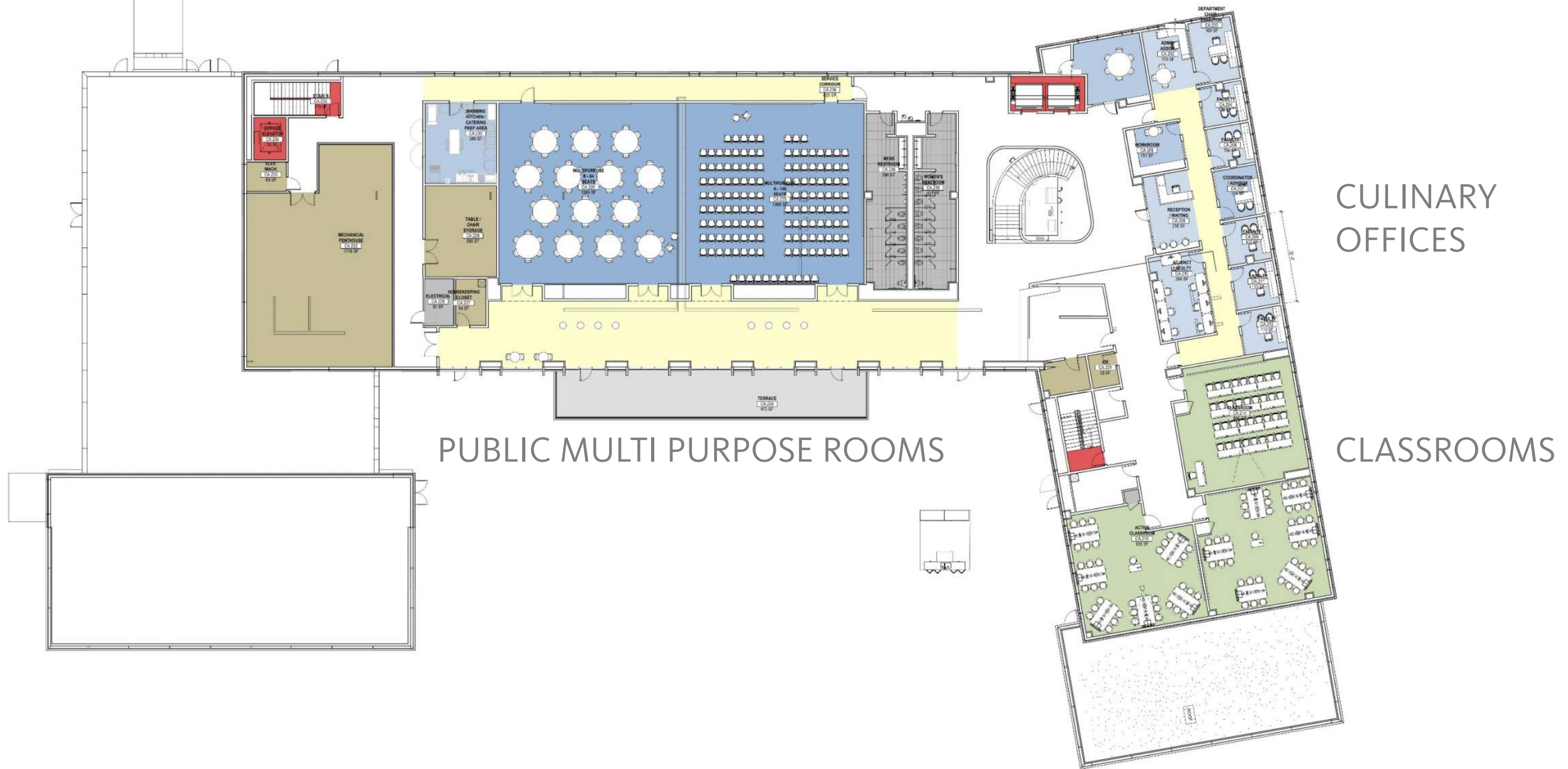
TEACHING KITCHENS

TEACHING COFFEE SHOP

TEACHING RESTAURANT

CAMPUS DINING

CULINARY ARTS SECOND FLOOR



PROGRAMMING

The full scope of the program are included in the current project. Total project square footage is 245,000 gross square feet, and includes the Central Plant.

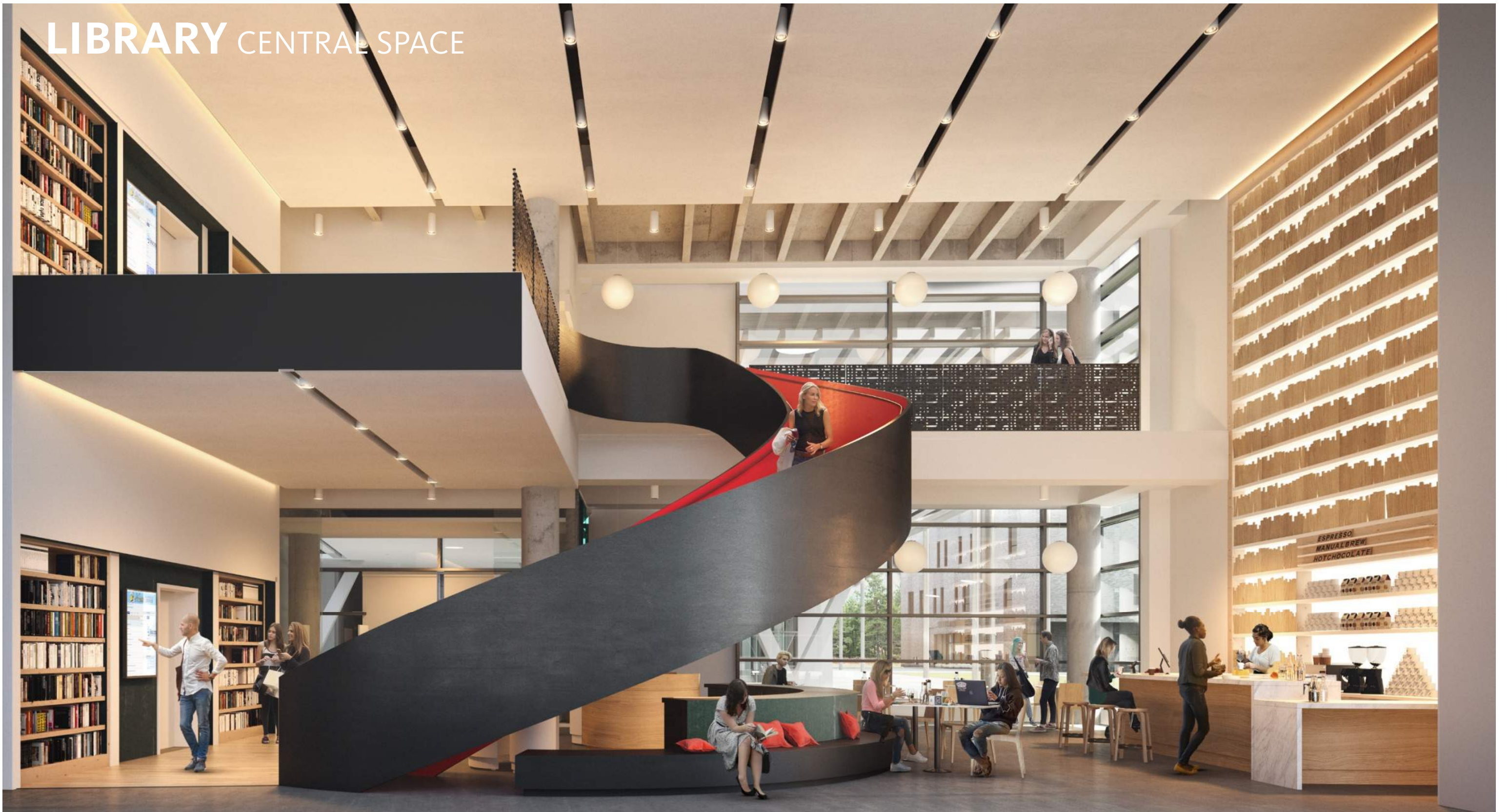
- 65 Instructional spaces (labs, workspaces, classrooms, computer rooms). **(14% more than the program)**
- Classrooms are **10% larger than programmed** (900 SF vs 800 SF)
- Added more informal student study spaces. **(200% more than the program)**
- Additional offices for Faculty and Adjunct faculty

INTERIOR DESIGN

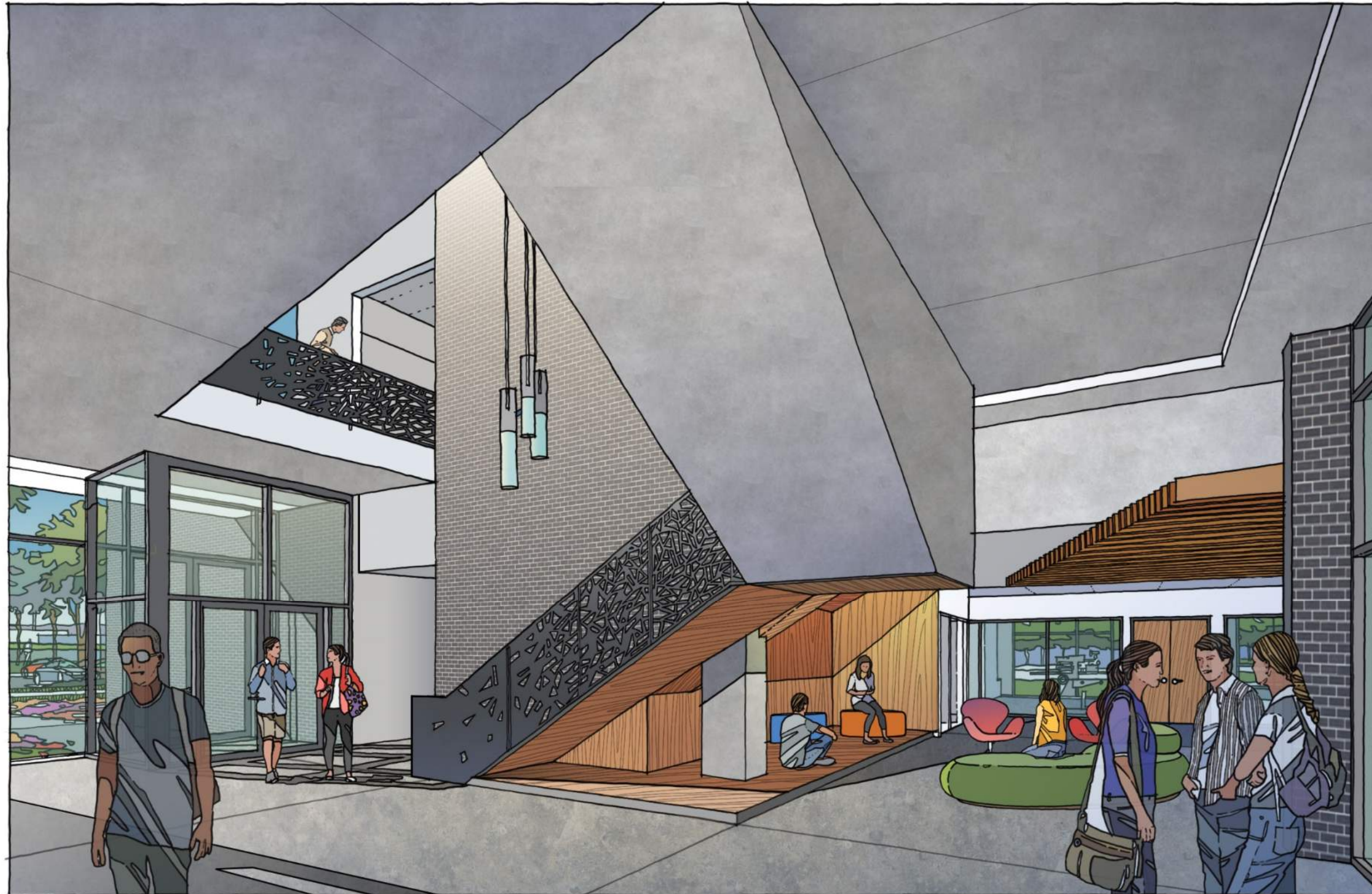
MAIN BUILDING WELCOMING SPACE



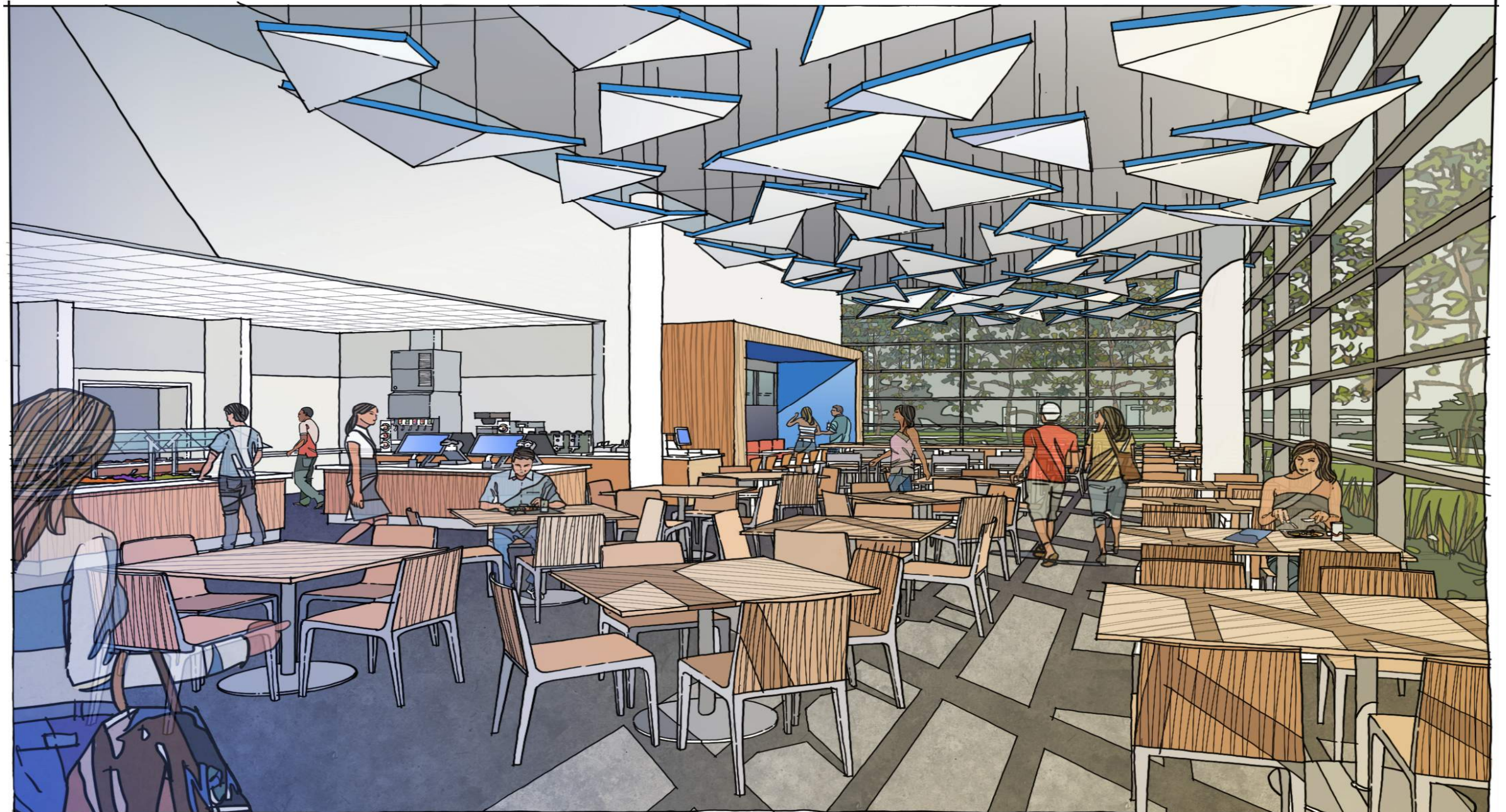
LIBRARY CENTRAL SPACE



STEM INTERIORS



CULINARY ARTS DINING SPACE



ESTIMATE | BUDGET

CONSTRUCTION BUDGET

29 January 2019 DD COST ESTIMATE		MAIN	STEM	CULINARY ARTS	Central Plant	SITE	TOTAL
Square Feet		86,631	96,705	54,912	8,404		246,652
COST OF WORK		\$ 24,286,650	\$ 27,577,453	\$ 18,143,299	\$ 6,289,494	\$ 10,459,586	\$ 86,756,482
DESIGN CONTINGENCY		\$ 1,117,186	\$ 1,268,563	\$ 834,592	\$ 289,317	\$ 481,141	\$ 3,990,798
FEE + Escalation		\$ 607,166	\$ 689,436	\$ 453,582	\$ 157,237	\$ 261,490	\$ 2,168,912
GC GENERAL CONDITIONS		\$ 1,335,766	\$ 1,516,760	\$ 997,881	\$ 345,922	\$ 575,277	\$ 4,771,607
TOTAL		\$ 27,346,768	\$ 31,052,212	\$ 20,429,355	\$ 7,081,970	\$ 11,777,494	\$ 97,687,799
						PER SF OVERALL	\$ 396.06
10/10/2018 Estimate		\$ 27,434,467	\$ 31,894,676	\$ 21,838,820	\$ -	\$ 12,463,209	\$ 93,631,172
Project Construction Cost Target				OVER/UNDER %	99.68%		\$ 98,000,000
ADD ALTERNATES				DEDUCT ALTERNATES			
ADD Two rows of parking to north end of site		\$ 922,155		1 Trellis, Deck at Culinary			\$ (450,000)
ADD access road to Rodd Field		\$ 288,730		2 Trellis, Deck, Planter at Library			\$ (227,500)
ADD water feature at court yard		\$ 755,476		3 Delete Courtyard Planting Culinary			\$ (185,000)
ADD Outdoor Kitchen & Courtyard Amenities		\$ 152,100		4 Delete Monumental Stairs (3)			\$ (100,000)
ADD Canopy Trellis and Roof Terrace		\$ 1,072,013		5			
Tall Monument Sign at Rodd Field		\$ 455,000		6			
Community Garden Area		\$ 277,500		7			
Additional Chiller Capacity at Central Plant		\$ 812,500		8			
Total Possible Additions		\$ 4,735,474		Total Possible Deletions			\$ (962,500)
TOTAL BUDGET W/ Alternates		\$ 102,423,272		TOTAL BUDGET W/ Alternates			\$ 96,725,299
Delta from Budget Target		\$ 4,423,272		Delta from Budget Target			\$ (1,274,701)

SCHEDULE | WHATS NEXT

SCHEDULE

As we complete the Design Development phase.

- Start Construction Documents following approval on 5 February and complete in May
- Bidding will be done during May and July and depending on contracting process, start construction Summer of 2019
- Occupancy **2nd Quarter of 2021**

BIDDING

Construction Documents will be prepared in two packages;

Package 1 will contain the documents for the Central Plant, Site Grading and Site utilities;

It is expected to be approximately \$10M dollars, Bids received in May

Package 2 will contain documents for the buildings and remainder of site work;

It is expected to be approximately \$88M dollars, with bids received in late June/July



COMMENTS | DISCUSSION